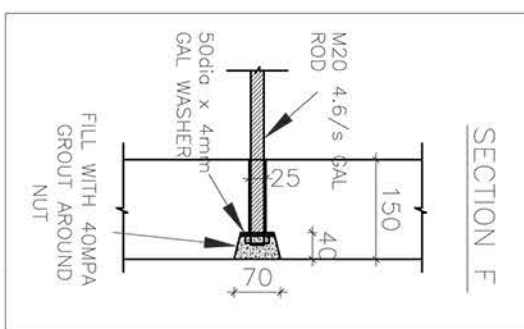
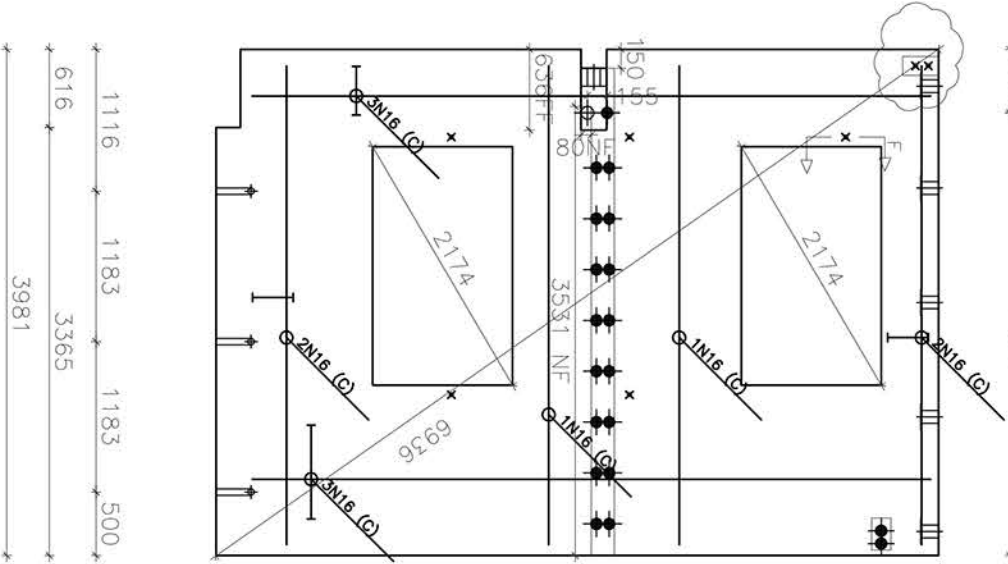


| | |
|----------------|-------------------|
| OVERALL | 5680 |
| LIFTERS | |
| BRACES | |
| OPENING | 190 2680 200 2610 |
| 20MM REBATE NF | 2870 260 2550 |
| M16 (C) | 2970 2710 |

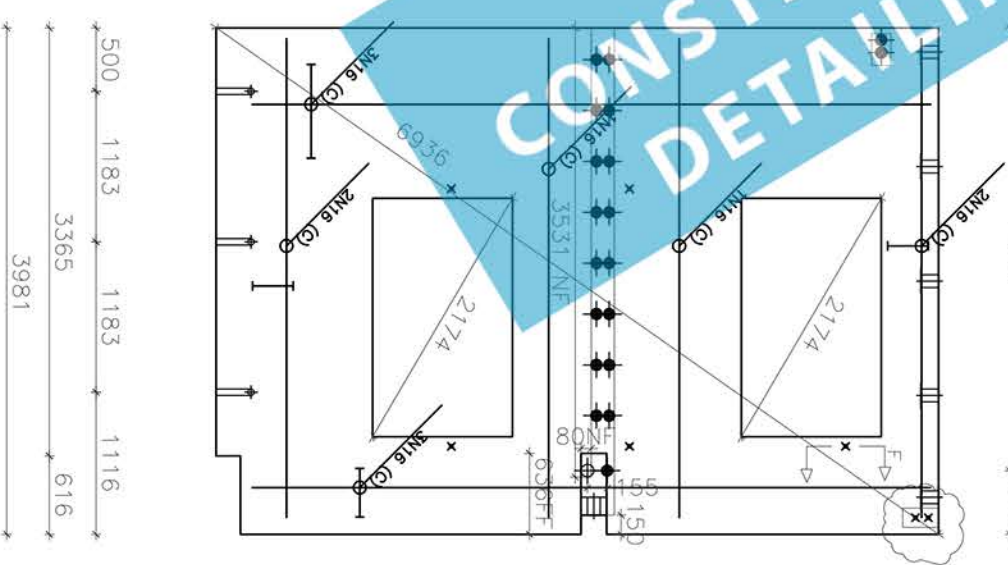
| | |
|-------------------|---------------------------|
| OVERALL | 3981 |
| LIFTERS | |
| BRACES | |
| 20MM REBATE FF | 55 150 3776 |
| OPENING | 766 1875 1340 |
| M20 (NF) | 3786 100 95 |
| 20MM REBATE NF | 55 150 3481 250 45 |
| M16 (NF) | 500 136 2 ROWS @ 400 CTRS |
| 25MM C-IN CONDUIT | 130 561 2025 1265 |
| M12 (C) | 291 800 900 900 191 |
| M16 (FF) | 500 3481 |



| | | | | |
|------|------|------|------------|-------------------|
| 1850 | 1400 | 1700 | 550 100 80 | 25MM C-IN CONDUIT |
| 2950 | 180 | 2025 | 150 95 280 | 20MM REBATE NF |
| 2870 | 200 | 2330 | 280 | 20MM REBATE FF |
| 5230 | | 450 | | M20 (NF) |
| 2990 | 100 | 2590 | | M16 (NF) |
| 2920 | | 2760 | | M16 (FF) |
| 1230 | 1100 | 1800 | 1100 450 | OPENING |
| 5680 | | | | OVERALL |

| | |
|-------------------|------|
| 50 DIA GROUT TUBE | 3981 |
| OPENING | 3365 |
| OVERALL | 616 |

| | |
|-------------------|---------------------------|
| OVERALL | 3981 |
| LIFTERS | |
| BRACES | |
| 20MM REBATE FF | 150 55 3776 |
| OPENING | 766 1875 1340 |
| M20 (NF) | 3786 100 95 |
| 20MM REBATE NF | 45 250 3686 |
| M16 (NF) | 500 136 2 ROWS @ 400 CTRS |
| 25MM C-IN CONDUIT | 1265 2025 561 130 |
| M12 (C) | 191 900 900 900 291 |
| M16 (FF) | 500 3481 |



| | |
|----------------|-------------------|
| OVERALL | 5680 |
| LIFTERS | |
| BRACES | |
| OPENING | 190 2680 200 2610 |
| 20MM REBATE NF | 2870 260 2550 |
| M16 (C) | 2970 2710 |

| | |
|-------------------|---------------------------|
| OVERALL | 3981 |
| LIFTERS | |
| BRACES | |
| 20MM REBATE FF | 55 150 3776 |
| OPENING | 766 1875 1340 |
| M20 (NF) | 3786 100 95 |
| 20MM REBATE NF | 45 250 3686 |
| M16 (NF) | 500 136 2 ROWS @ 400 CTRS |
| 25MM C-IN CONDUIT | 1265 2025 561 130 |
| M12 (C) | 191 900 900 900 291 |
| M16 (FF) | 500 3481 |

| | | |
|---|---|-----------------------------|
| 17 | M12 (NF) | Strong backs during lifting |
| 17 | M16 (NF) | |
| 2 | M20 (NF) | |
| | M24 (NF) | |
| | M12 (FF) | |
| 1 | M16 (FF) | |
| | M20 (FF) | |
| | M24 (FF) | |
| 5 | M12 (C) | |
| 1 | M16 (C) | |
| | M20 (C) | |
| | M24 (C) | |
| 7 | 25MM CONDUIT 150MM LONG | |
| | CAST-IN PLS ALL TO STEEL SHOP DETAIL | |
| | 15L82 FABRIC CENTRAL UNO. TYPICAL & NOT SHOWN IN PLAN | |
| | M16 TRIMMER TYPICAL UNO. | |
| X | EXTRA REINFORCEMENT SET OUT AS SHOWN IN PLAN | |
| ITEMS TYP PLACED CENTRALLY FOR (C) SET OUT AT 40MM MIN CONC COVER UNO. DO ALL LAPS & EXTENSIONS AT 600MM TYP. TRIMMERS AT ALL PERIMETERS & OPENINGS | | |
| 1ea | No. | NUMBER |
| 150 | mm | THICK |
| 18.3 | m2 | AREA |
| 2.8 | m3 | MASS |
| 6.6 | Tonne | WEIGHT |

PANEL VIEW INTERNAL UNO.
PANELS 150MM THICK UNO.
DO 20MM CHAMFERS TO EDGES UNO.
SET OUT FOR 20MM VERTICAL JOINTS & FOR 20MM HORIZONTAL JOINTS

MARK 71

71 SIM (MIRROR)

71