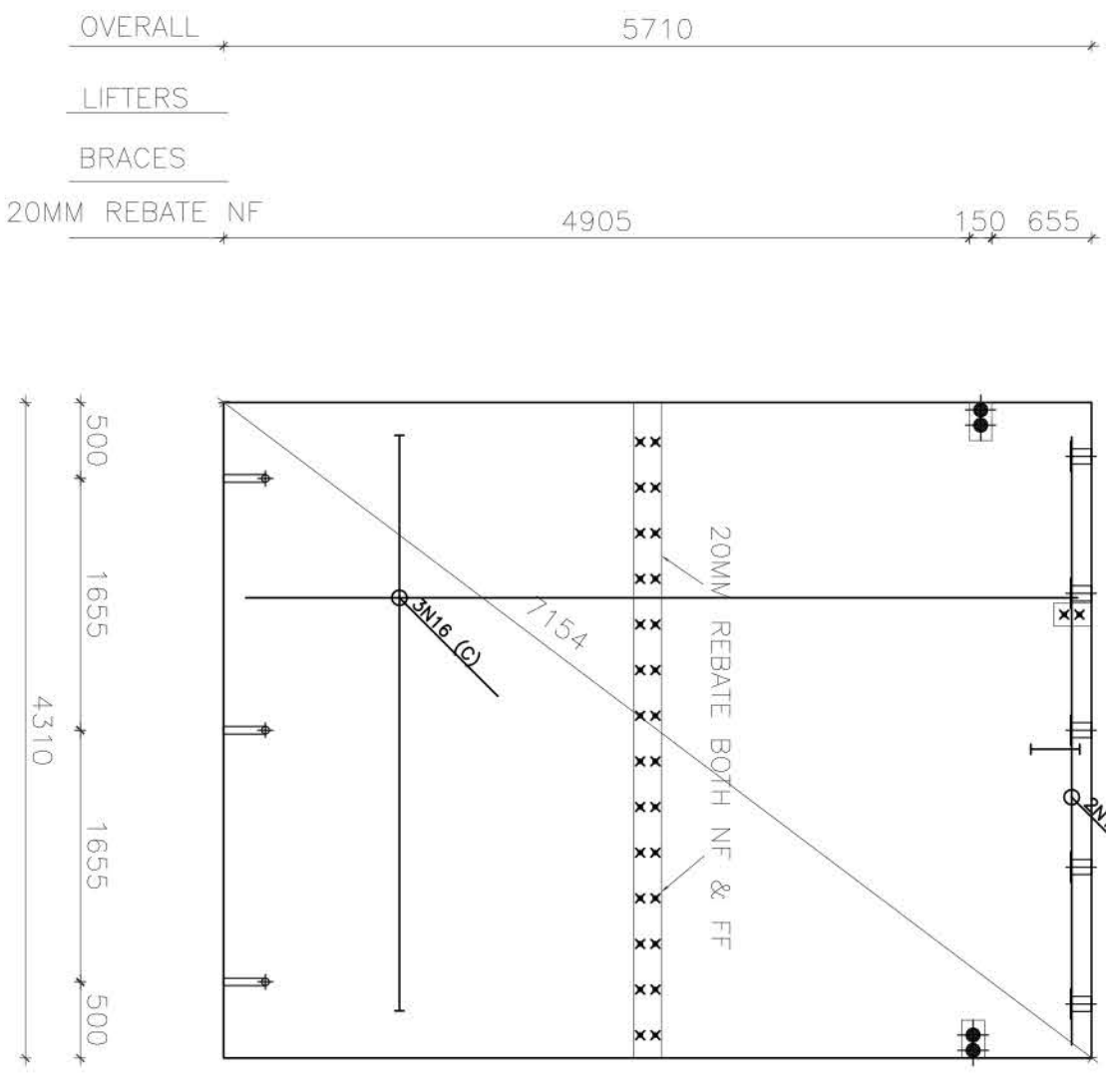
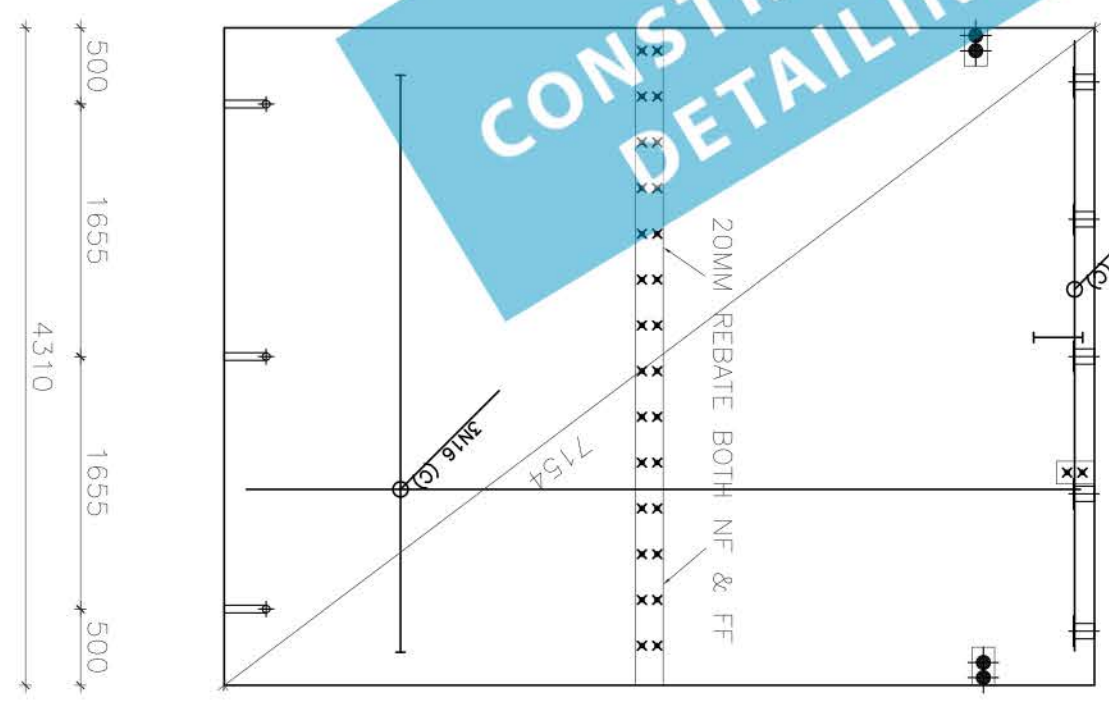


OVERALL	4310
LIFTERS	
BRACES	
M20 (NF)	50,100
20MM REBATE NF	250
M12 (C)	355
25MM C-IN CONDUIT	900
16MM C-IN CONDUIT	1395
2 ROWS @ 300 CTRS	2915
	4010
	2590
	900
	900
	900
	355
	100,50



25MM C-IN CONDUIT	100,80
16MM C-IN CONDUIT	2870
20MM REBATE NF	2700
M20 (NF)	4930
OVERALL	5710
	5530
	2740
	100
	2000
	155
	50,730
	50
50 DIA GROUT TUBE	500
OVERALL	4310

OVERALL	4310
LIFTERS	
BRACES	
M20 (NF)	50,100
20MM REBATE NF	250
M12 (C)	355
25MM C-IN CONDUIT	900
16MM C-IN CONDUIT	1395
2 ROWS @ 300 CTRS	2915
	4010
	2590
	900
	900
	900
	355
	100,50



OVERALL	5710
LIFTERS	
BRACES	
M20 (NF)	4930
20MM REBATE NF	2700
M12 (C)	355
25MM C-IN CONDUIT	900
16MM C-IN CONDUIT	1395
2 ROWS @ 300 CTRS	2915
	4010
	2590
	900
	900
	900
	355
	100,50

●	Brace points	
⌈	Face lifters	
⌋	Edge lifters	
⌋	Strong backs during lifting	
●	M12 (NF)	
●	M16 (NF)	
⊖	M20 (NF)	
⊖	M24 (NF)	
⊖	M12 (FF)	
⊖	M16 (FF)	
⊖	M20 (FF)	
⊖	M24 (FF)	
⊖	M12 (C)	
⊖	M16 (C)	
⊖	M20 (C)	
⊖	M24 (C)	
○	25MM CONDUIT 150MM LONG	
	CAST-IN PLUS ALL TO STEEL SHOP DETAIL	
C	15L82 FABRIC CENTRAL UNO, TYPICAL & NOT SHOWN IN PLAN	
C	1N16 TRIMMER TYPICAL UNO, EXTRA REINFORCEMENT SET OUT AS SHOWN IN PLAN	
X	ITEMS TYP PLACED CENTRALLY FOR (C) SET OUT AT 40MM MIN CONC COVER UNO DO ALL LAPS & EXTENSIONS AT 600MM TYP, TRIMMERS AT ALL PERIMETERS & OPENINGS	
1ea	No.	NUMBER
150	mm	THICK
24.6	m ²	AREA
3.7	m ³	MASS
8.9	Tonne	WEIGHT



(MIRROR)

MARK 73

PANEL VIEW INTERNAL UNO PANELS 150MM THICK UNO. DO 20MM CHAMFERS TO EDGES UNO. SET OUT FOR 20MM VERTICAL JOINTS & FOR 20MM HORIZONTAL JOINTS